

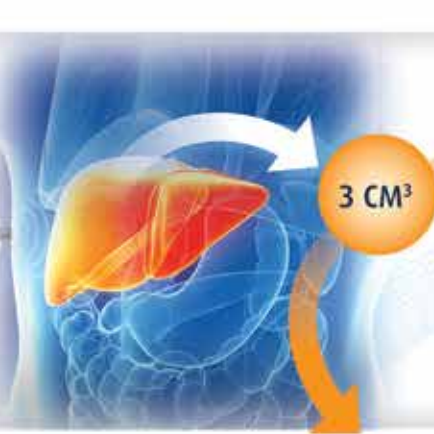
# DUAL FUNCTION Liver Diagnostics

## STIFFNESS ASSESSMENT



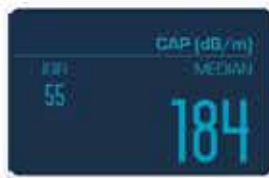
- Mechanically induced 50 Hz shear wave
- Measure shear wave speed with pulse echo ultrasound
- Liver stiffness calculated and expressed as a median over 10 measurements

VCTE™



- *Large 3 cm<sup>3</sup> sample size compensates for liver tissue heterogeneity*
- *Liver stiffness and attenuation rate assessed from the same measurements*
- *Exploration volume of 3 cm<sup>3</sup> is over 100x than with needle biopsy<sup>1</sup>*

## CONTROLLED ATTENUATION RATE

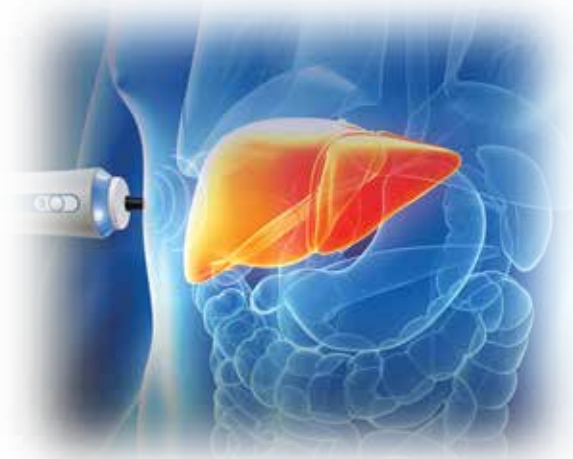


- CAP™ is computed from the ultrasound acquired for stiffness measurement
- CAP™ is only calculated if the stiffness acquisition is valid
- CAP™ is expressed in decibel per meter (dB/m)

CAP™

## ONLY FIBROSCAN<sup>®</sup> SELECTS THE RIGHT PROBE FOR MOST PATIENT MORPHOLOGIES

By adjusting for the skin to liver capsule distance, a consistent 3cm<sup>3</sup> explored volume can be maintained over time and among different operators.



*FibroScan<sup>®</sup> offers different probes that accurately and consistently measure shear wave speed in the liver across a range of body types.*

*Probe selection tool automatically matches the right probe to the patient morphology.*

1. Bandar Al Knawy, Mitchell Shiffman. Percutaneous Liver Biopsy in Clinical Practice. *Liver International*. 2007;27(9):1166-1173.



\*The CAP capability module is not FDA Cleared for pediatric testing. S+ probe only available on the FibroScan 502 Touch.

Learn more by visiting [www.echosens.us](http://www.echosens.us)



ECHOSENS NORTH AMERICA • 1050 Winter St. • Waltham, MA 02451  
(781) 790-0845 • [inquiries@echosens.com](mailto:inquiries@echosens.com)

#### Indications for Use

The FibroScan<sup>®</sup> system is intended to provide 50Hz shear wave speed measurements and estimates of stiffness as well as 3.5MHz ultrasound coefficient of attenuation (CAP, Controlled Attenuation Parameter). The shear wave speed and stiffness; and CAP may be used as an aid to clinical management of adult patients with liver disease.

The shear wave speed and stiffness may be used as an aid to clinical management of pediatric patients with liver disease.